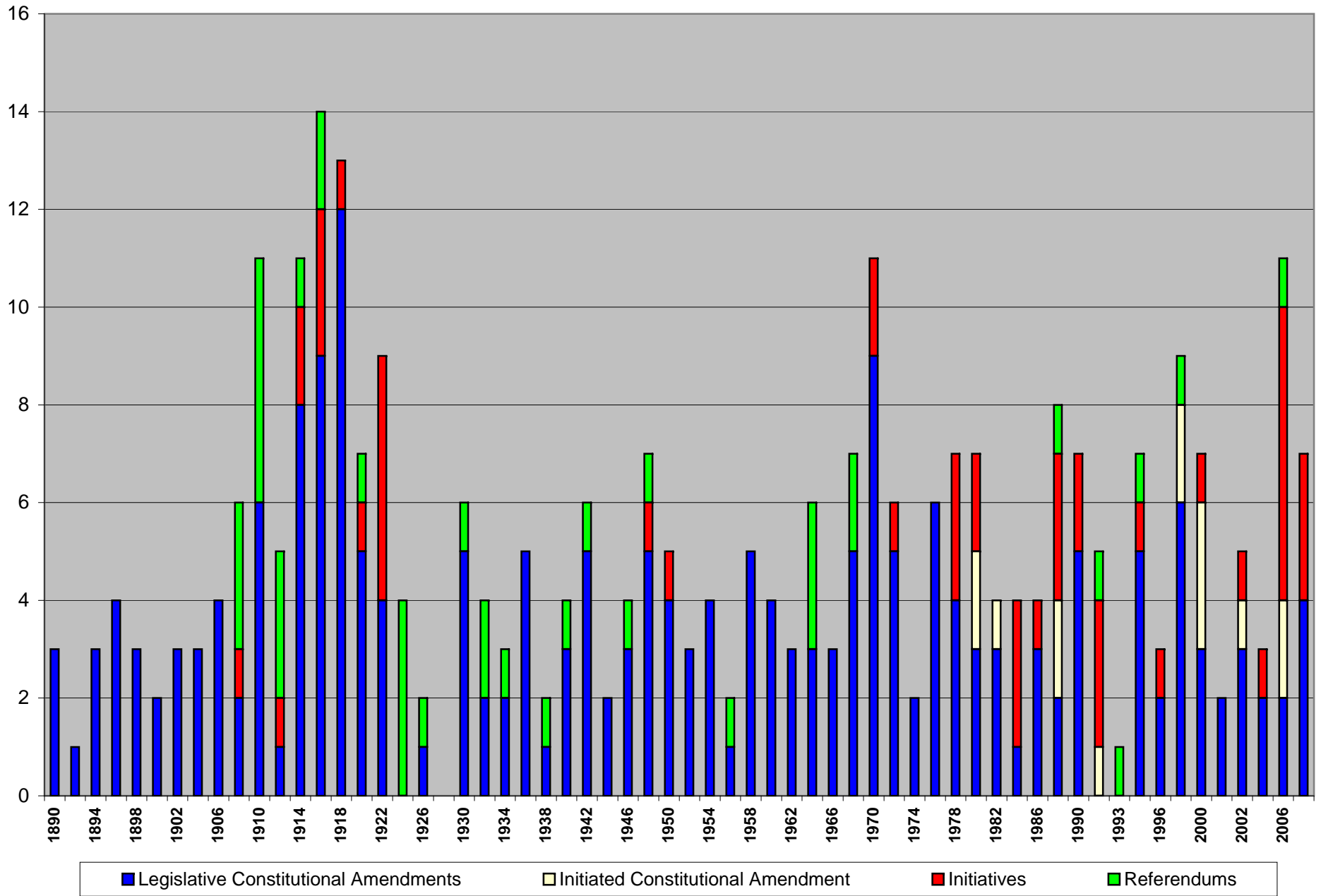
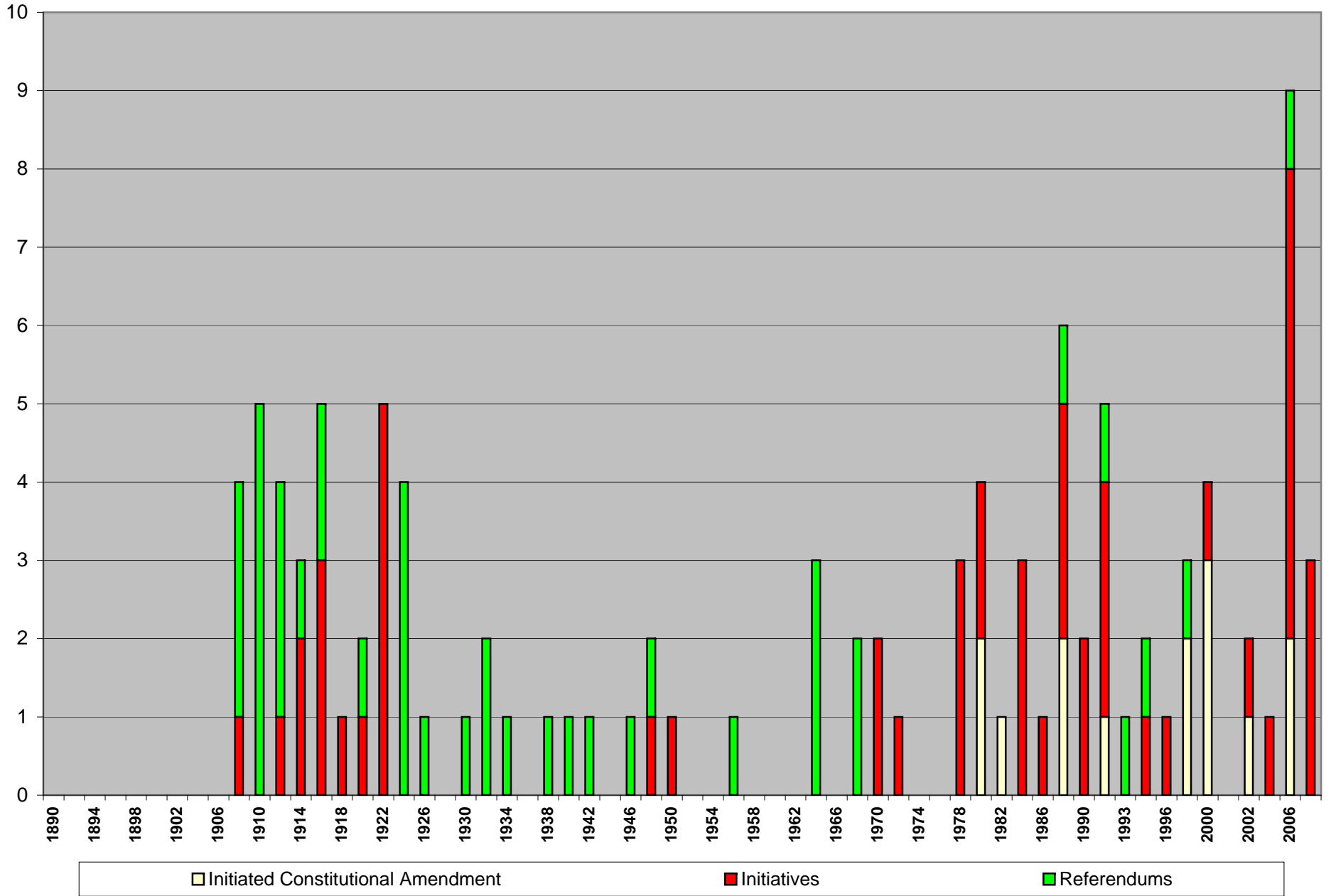


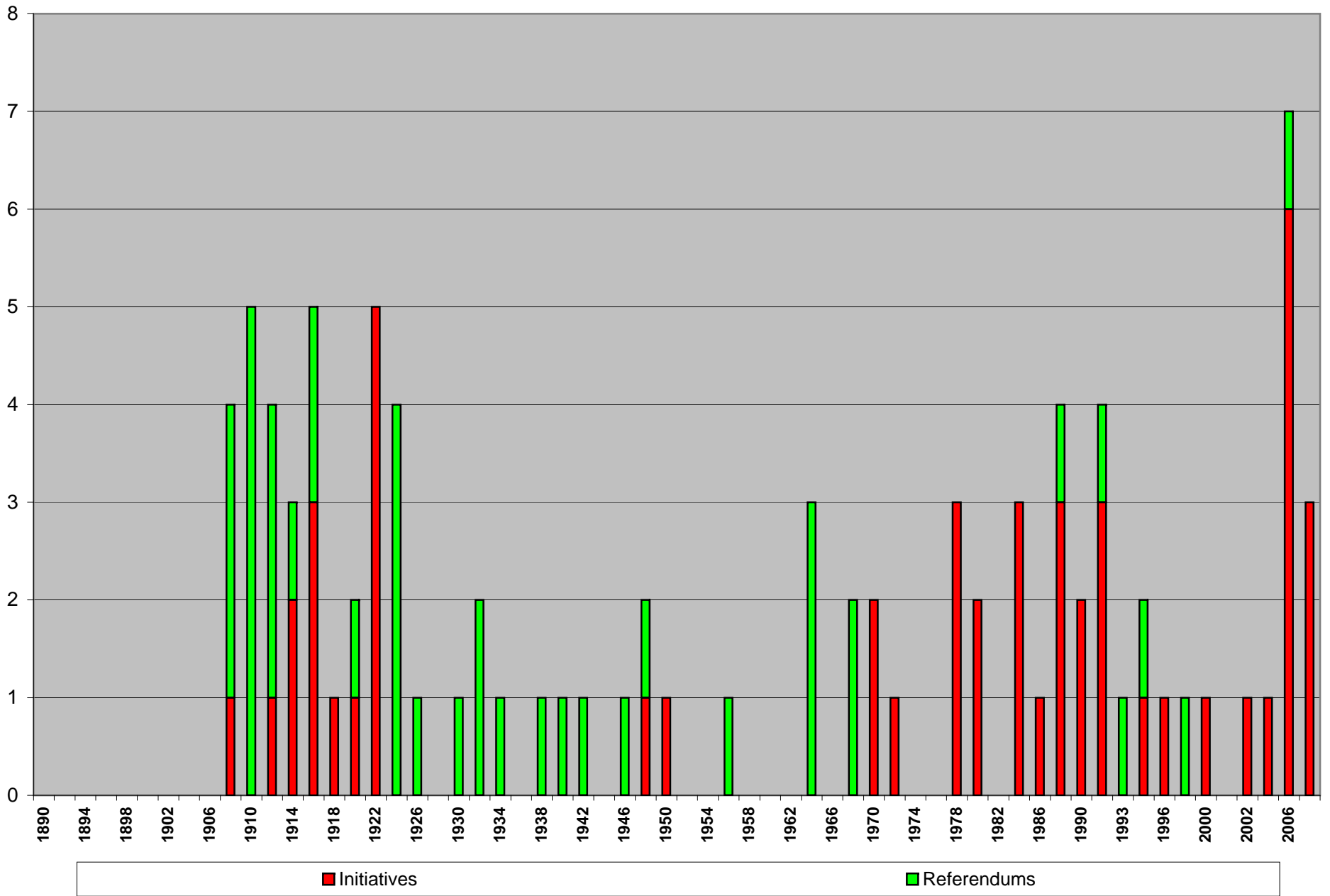
South Dakota Ballot Questions



South Dakota Petitioned Ballot Questions



South Dakota Statutory Initiatives and Referendums



Year	Legislative Constitutional Amendments	Initiated Constitutional Amendment	Initiatives	Referendums	Total Ballot Questions
1890	3		0	0	3
1892	1		0	0	1
1894	3		0	0	3
1896	4		0	0	4
1898	3		0	0	3
1900	2		0	0	2
1902	3		0	0	3
1904	3		0	0	3
1906	4		0	0	4
1908	2		1	3	6
1910	6		0	5	11
1912	1		1	3	5
1914	8		2	1	11
1916	9		3	2	14
1918	12		1	0	13
1920	5		1	1	7
1922	4		5	0	9
1924	0		0	4	4
1926	1		0	1	2
1928	0		0	0	0
1930	5		0	1	6
1932	2		0	2	4
1934	2		0	1	3
1936	5		0	0	5
1938	1		0	1	2
1940	3		0	1	4
1942	5		0	1	6
1944	2		0	0	2
1946	3		0	1	4
1948	5		1	1	7
1950	4		1	0	5
1952	3		0	0	3
1954	4		0	0	4
1956	1		0	1	2

Year	Legislative Constitutional Amendments	Initiated Constitutional Amendment	Initiatives	Referendums	Total Ballot Questions
1958	5		0	0	5
1960	4		0	0	4
1962	3		0	0	3
1964	3		0	3	6
1966	3		0	0	3
1968	5		0	2	7
1970	9		2	0	11
1972	5		1	0	6
1974	2	0	0	0	2
1976	6	0	0	0	6
1978	4	0	3	0	7
1980	3	2	2	0	7
1982	3	1	0	0	4
1984	1	0	3	0	4
1986	3	0	1	0	4
1988	2	2	3	1	8
1990	5	0	2	0	7
1992	0	1	3	1	5
1993	0	0	0	1	1
1994	5	0	1	1	7
1996	2	0	1	0	3
1998	6	2	0	1	9
2000	3	3	1	0	7
2001	2	0	0	0	2
2002	3	1	1	0	5
2004	2	0	1	0	3
2006	2	2	6	1	11
2008	4	0	3	0	7