

Hughes County

104 E Capitol Avenue
Pierre, SD 57501
Fax: 605-773-7347



County Commissioners
Telephone 605-773-7477

County Manager
Telephone 605-773-7477

County Planner
Telephone 605-773-4441

June 13, 2018

SD State Board of Elections
c/o Office of the Secretary of State
State Capitol, Suite 204
500 East Capitol Avenue
Pierre, South Dakota 57501

Re: Vote Centers and e-poll books

Members of the South Dakota Board of Elections,

I am sending you this letter to encourage you to continue to support vote centers and e-poll books such as we use here in Hughes County. I understand that there is a proposal to eliminate their use in the State and I would encourage you to oppose that effort at this time.

I understand that there were some issues revolving around the e-poll books during the recent primary election. While it was a tense time for our Finance Officer and election workers, we were able to get the e-poll books back up and running in a matter of minutes with only minor disruption in voting. Only three of our seven vote centers had to be closed for any length of time, the longest being for 20 minutes. The software supplier worked closely with our county staff and election workers to come up with a solution and to get it implemented quickly.

I would hope that in the wake of the issues which came up on Election Day, that we could all work together to resolve the issues and to move forward rather than to scrap the entire system.

While vote centers are not a complete panacea, Hughes County has found there to be more positives than negatives. We feel that the vote centers are much easier for the voters. With vote centers, a voter can choose where he votes, rather than having to vote only in the precinct which he is registered. We have tried to locate our vote centers across the community in easy to reach locations with good parking. At least one is located very conveniently for state employees, since they make up a substantial number of our voters. It is also easier to find election workers for vote centers. We no longer have to get a volunteer from each party from within each precinct. We can recruit those workers from the entire county. That is a serious advantage for us with the increasing popularity of cell phones and the corresponding difficulty with reaching people.

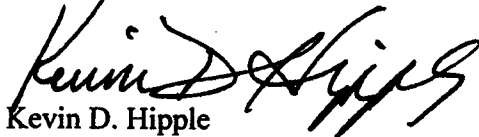
Once again, I would encourage you to allow vote centers and the use of e-poll books and would encourage your help in resolving any issues with either. This letter is not the official

opinion of either Hughes County or the County Commission. It is simply the opinion of a member of the County staff.

Thank you for your consideration and good luck in your deliberations on the future of elections in South Dakota.

If you have any questions or concerns, feel free to call me at 773-7477.

Sincerely,

A handwritten signature in black ink, appearing to read "Kevin D. Hipple". The signature is written in a cursive style with a large, sweeping initial "K".

Kevin D. Hipple
Hughes County Manager

cc: Norm Weaver, Hughes County Commission Chairman

YANKTON COUNTY AUDITOR
321 W 3RD St., SUITE 100
YANKTON, SD 57078



605-260-4400, Ext 0
FAX: 605-260-4494
patty@co.yankton.sd.us

State Board of Elections

The voters of Yankton County really appreciate the convenience of not being restricted to a particular voting place. People from outside town who work in Yankton can now vote during the day rather than take up their family time in the evening. There's never any doubt where you can vote. It probably helps to increase voter participation. There are bound to be technological challenges with anything new. But we didn't quit driving tractors and go back to horses when the first tractor over-heated. Electronic poll books have already been a big plus in our county and it will only get better.

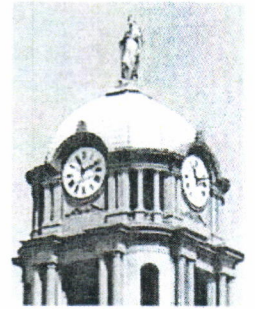
I know the electronic poll books might create new challenges for Pierre. But what's important is to make voting as convenient and efficient as possible for the people across the state.

Patty Hojem
Yankton County Auditor

Brown County Auditor

Maxine Fischer

Maxine.Fischer@BrownCounty.sd.gov



25 Market Street, Ste 1
Aberdeen, SD 57401
Phone: 605-626-7110
Fax: 605-626-4010

June 13, 2018

Good Afternoon,

I am very disappointed that you are even considering a proposal to ban E-pollbook's and Vote Centers. The Aberdeen City Commission, the Aberdeen School Board, the Brown County Commission, our Vote Center Officials AND the residents like the idea of going to any Vote Center location to vote.

Granted, we had issues on Tuesday, June 5, 2018 but we did not have issues in 2014 or 2016. I am not sure what the connectivity issue was, but do know that our main issue was the fact that some of our older registrations do not have registration dates in Total Vote and that is what B-Pro used when generating the E-Pollbook files. When a VC Official scanned the DL – and the Pollbook could not find a particular name, the E-Pollbook brought up a name alphabetically near the one entered. The VC Official called us and we looked up the name, verified they were eligible to vote and gave the VC Official the ballot style they needed. The name and ballot type were written down by the VC Official, the DL had already been reviewed so the ballot was given to the individual.

I explained the issues we had on June 5 to the Commission this past Tuesday (Jun 12) and also explained my thoughts on corrective actions to take prior to the General. One of which, is to have a paper list available for the VC Official to use BUT if all the info had been there like it was in 2014 and 2016, the list would not have been used. I emphasize that a VC Official needs to talk to us whenever they cannot bring up a name – we authorize an Emergency Voter Card if we had made a mistake or they follow the Provisional Ballot procedure.

Hind sight – is so clear, I keep thinking IF I had done this – If I had done that. But THE IMPORTANT thing is our machine count matched our 11 Vote Center Recaps for ballots used. Our numbers are correct! As for being the last to report – it could very well happen again – I will not RUSH to get returns out just to satisfy the media, candidates, or your office. ACCURACY IS MORE IMPORTANT THAN BEING DONE BY A CERTAIN TIME.

I do not intend to offend anyone in this letter, especially the Sec of State's Office, ES&S, SeaChange or B-Pro. Our support from all of you is great.

Thank you,

Maxine Fischer
Brown County Auditor